

## President's Message—SFC

Fellow SWA Members—

My wife and I just moved into a condominium in a retirement facility. The building is five stories high, and we are on the fifth floor. I'm making it a point to take the stairs at least twice a day. This keeps me in shape. I can't help thinking how in life there's always an easy way to do something and a hard way. In general, we want to choose the easy way, right? But taking the elevator each time doesn't do my health any good! Similarly, in our painting, taking shortcuts isn't always the best way to a finished painting, although it might be the most expedient. Sure, we get more paintings done. But the point is not quantity but quality. A hurried painting is almost guaranteed not to be your best. Now, I'm not suggesting you paint each individual leaf on that tree. What I am suggesting is that you take the time to do things right, based on your knowledge and experience. Put in the hours; hone your skills; and you will become a better painter.

Our Annual show starts June 27<sup>th</sup>, and it runs until the 18<sup>th</sup> of August. The call for entries opened on May 23<sup>rd</sup>, so if you are reading this newsletter before June 16<sup>th</sup>, you still have time to enter. This is our main exhibition for the year and having a painting in this show is prestigious. So, give it your best shot! And, if you don't yet have your Signature Award, getting into the Annual gives you 30 points toward the 150 points that you need for that award.

Volunteering for this organization is a way to give back to the artist community. It doesn't take much to make an impact, and we have many ways for you to do that. In return, you will get our eternal gratitude. So, consider becoming a member of the board, helping to hang paintings, helping out with our monthly artist demonstrations, being our webmaster. Or consider other ways that you can ensure SWA continues to thrive. After all, we are a non-profit that depends for our survival on our volunteers. Please, get in touch with us at the email below. Thanks!

Please stay healthy and safe. And make art a part of your life every day!

**Jim Stinger**  
SFC President

People's Choice Award for the March–April Exhibit:  
“California Flowers on Highway One,” Oil by Anneliese  
Drbal SWA

**September–October Deadline: August 3**

## General Meeting and Demo

Saturday, July 20, 1–3 pm

**Lillian Wu**

### Fusing Artistic Forms on Fabric and Fiber

Lillian Wu, SWA signature member, will demonstrate on several types of fabric with dyes and prints. She will use her brush painting techniques, silk screening and printing. She will display her silk scarves, wall hangings and collages.

An artist with skills in Chinese brushwork painting and watercolor in a Western style, Lillian formally studied art for many years during her childhood in Southeast Asia and later earned her B.A. degree at Immaculate Heart College in Los Angeles. She has studied under the mentorship of Art Masters from Hong Kong, Manila, Taipei and San Francisco in Chinese brushwork painting.

Masterpiece Gallery in Millbrae, CA is Lillian's venue for displaying artwork, art collections, and holding educational and art-related workshops.

Visit Lillian's website at: <http://lillianwuart.com/>

## General Meeting and Demo

August 17, 1–3 pm

**James Torlakson**

James Torlakson has been working as a professional fine artist since 1971. He is best known for his photo-based realism. The realism in his work is oriented toward the sensuous consumption and reinterpretation of the real world.

His realist oils, watercolors, aquatint etchings and drawings have been widely exhibited nationally and internationally. Many of his artworks are housed in the permanent collections of American Museums.

Visit Torlakson's website at: <http://www.jamestorlakson.com/>

Go to: [societyofwest-coastartists.com](http://societyofwest-coastartists.com) for the Zoom link to demos. Please mute your computer when joining.

## President’s Message–SJVC

Members,

I'd like to thank our members for their participation in the Toca Winery Exhibition. The exhibit closed on May 22, 2024. This exhibit was a beautiful mix of oils, watercolors, pastels, and mixed-media pieces.

On Saturday, May 25th, members will participate in a hands-on Demo on Abstract Art at the Door Art Gallery. It will be lead by Jeanette Goulart. Jeanette is a mix-medium artist painting and creating lessons of Abstract Art on-line.

I'd like to invite members to two independent shows by SWA Members. At the South of Shaw Company, Denise McGill presents her collage artwork during the month of May. Member Daniel Janzen will be exhibiting at the Downtown Artist Gallery throughout the month of June.

Remember to prepare for the SWA Annual. Online postings of your artwork has begun as of May 23rd until June 16th. Accepted pieces to the Annual will be delivered to the San Bruno Gallery on June 27th. This is a great opportunity for those members working on earning their Signature Award. In closing, please stay healthy and keep painting.

Thank you for your contributions to the Arts.

**Jesus Sepulveda, President**  
SWA-SJVC

## A New Opportunity to Show Your Art

SWA is opening another opportunity to show your art. In late summer SWA will open an Online Gallery separate from our existing Gallery exhibit, then later the member shows will be both Online and in Gallery. We will use ShowSubmit to host our shows. Some of the shows will be for members only and some will be open to the public. The goal of this additional opportunity is to increase SWA visibility, attract new members and increase revenue. There will be jurying, prizes, and recognition for excellent work.

You will need to register at ShowSubmit with a username and password. Take a look at their website <https://showsubmit.com> and register if you like. SWA has an account with ShowSubmit and we are ready when the online prospectus is created after the Annual.

*If you would like to announce your shows or awards, please send the information to Laura Johnson at [dollsinmin@sbcglobal.net](mailto:dollsinmin@sbcglobal.net). We will include your information, space permitting.*

### SAN FRANCISCO CHAPTER CONTACTS

SFC President/ Signature Awards	Jim Stinger	650-391-5959
1st Vice President	Guy Magallanes	650-575-9158
2nd Vice President	Yvonne Newhouse	650-504-5559
Recording Secretary/ Director of Exhibits/ Membership/ Corresponding Secretary	Carrie Drilling	650-692-8998
Treasurer/ Gallery Coordinator	Sharon Harris	650-307-2431
Demos/Publicity	Leona Marini	650-274-6441
Web Master	Sherry Vockel	650-922-7474
Bulletin	Laura Johnson	650-533-1239

**SFC Center Hours: 11–3, Thursday–Saturday**

### SAN JOAQUIN CHAPTER CONTACTS

SJVC Presiden.	Jesus Sepuleda	559-438-7633
1st Vice President	Linda Lamb	559-275-1597
2nd Vice President	Rudy Murrietta	559-709-0486
Secretary	Shirlee Rehart	559-436-4552
Phone/Membership	Maxine Fargason	559-439-4403
Treasurer	Denise McGill	559-229-3025

## SCHEDULE OF EVENTS

### SAN FRANCISCO CHAPTER

#### 74<sup>th</sup> Annual Exhibit

June 27–August 18

Awards Reception August 18, 1:30–2:30

#### July

20

Board Meeting/Lillian Wu Demo

#### August

17

Board Meeting/James Torlakson Demo

#### Signature Member Show

August 22–September 27

Please inform the board if you know of members who are ill or have passed away or have lost family members.

Welcome to new member Amanda Edelman.

## 2024 SWA Exhibit Schedule

January 11, 2024–January 24, 2025

January/February Exhibit	January 11– February 23 <b>Call for entry 12/6/23. Closed 1/1/24. Juried 1/2 and 1/3. Delivery 1/5, 11–3pm and 1/6, 10–1pm. After 1pm judging for awards.</b>
SWA Board Meeting/Demo	January 20 Zoom; Demo Artist Kim Lordier
SWA Board Meeting/Demo	February 17 Zoom; Demo Artist Ellen Howard
March/April Exhibit	February 29–April 13 <b>Call for entry 1/15. Closed 2/18/24. Juried 2/20 and 2/21 Delivery 2/23, 11–3pm and 2/24, 10–1pm. After 1pm judging for awards.</b>
Kim Lordier Workshop	March 6–8, 9am–4pm
SWA Board Meeting/Demo	March 16 Zoom; Demo Artist Jim Gleeson
San Mateo School District Exhibit	April 15–April 29
SWA Board Meeting/Demo	April 20 Zoom; Demo Artist Kathleen Alexander
May/June Exhibit	May 9–June 21. <b>Call for entry 3/30. closed 4/28. Juried 4/30, 5/1. Delivery 5/3, 11–3pm and 5/4, 10–1pm. Judging for awards after 1 pm.</b>
SWA Board Meeting/Demo	May 18 Zoom; Demo Artist Dale Laitinen
SWA Board Meeting/Demo	June 15 Zoom
74 <sup>th</sup> Annual Exhibit	June 27–August 18. <b>Open call for entries 5/23, closed 6/16. Juried in 6/18 or 6/19. Delivery of paintings 6/21 key 11-3, 11-3, 6/22 10-1. Judging after 1 pm. Opening Reception TBD; Awards Reception August 18 from 1:30–2:30.</b>
SWA Board Meeting	July 20 Zoom
SWA Board Meeting	August 17 Zoom
Signature Member Show	August 22–September 27. <b>Delivery 8/18–8/22; entry by entry form.</b>
SWA Board Meeting/Demo	September 21 Zoom
October/November Exhibit	October 3–November 15. <b>Open call for entries 9/14, closed 9/22. Juried in 9/24 and 9/25. Delivery 9/27, 11-3 or 9/28, 10-1. Judging for awards after 1 pm.</b>
SWA Board Meeting/Demo	October 19 Zoom; Demo Artist Will Maller
SWA Board Meeting	November 16 Zoom/Demo
Skyline College Show	November 18, 2024–January 10, 2025
SWA Board Meeting/Demo	November 16 Zoom

## 2024 SFC Demonstrations

January 20	Kim Lordier	Snowscape in Pastel	<a href="http://www.kimfancherlordier.com/">www.kimfancherlordier.com/</a>
February 17	Ellen Howard	Curious about Gouache?	<a href="http://www.ellenhowardart.com">www.ellenhowardart.com</a>
March 16	Jim Gleeson	Balboa Cafe in Oil	<a href="http://www.jimgleeson.com">www.jimgleeson.com</a>
April 20	Kathleen Alexander	Painting Vibrant Flowers in Watercolor	<a href="http://www.kathleenalexanderart.com">www.kathleenalexanderart.com</a>
May 18	Dale Laitinen	New Mexico Landscape in Watercolor	<a href="http://www.dalelaitinen.com">www.dalelaitinen.com</a>
June 15	Deborah Shea	Blossoms in Pastel	<a href="http://www.deborahsheastudios.com">www.deborahsheastudios.com</a>
July 20	Lillian Wu	Fusing Artistic Forms on Fabric & Fiber	<a href="http://lillianwart.com/">http://lillianwart.com/</a>
August 17	James Torlakson	TBD	<a href="https://www.jamestorlakson.com/">https://www.jamestorlakson.com/</a>
September 21	Dmitry Grudsky	TBD	<a href="http://www.grudsky.net/">www.grudsky.net/</a>
October 19	Will Maller	TBD	<a href="http://www.willmaller.com">www.willmaller.com</a>
November 16	Camille Przewodek	TBD	<a href="http://www.przewodek.com">http://www.przewodek.com</a>

## May–June 2024 Exhibit

<b>1<sup>st</sup> Place</b>	<b>Susan Jochheim</b>	<b>Glasigloo</b>	<b>Watercolor</b>
<b>2<sup>nd</sup> Place</b>	<b>Sharon Slusarz Harris</b> SWA	<b>Filtered Light</b>	<b>Pastel</b>

**Judges:** Stephanie Getzler SWA, Joyce Barron Leopardo SWA and Sherry Vockel SWA

**Participants:** Barbara Alger SWA, Karmen Askew, Teresa Beyer, Kathryn Degliantoni, Rafael DeSoto Jr., Mark Dobrin, Carrie Drilling SWA, Sharon Harris SWA, Susan Jochheim, Karen Mitchell, Leona Moriarty SWA, William Ramroth SWA, Helen Scheel SWA, Greta Waterman, and Vicki Wilson

**Volunteers:** Yvonne Newhouse, Carrie Drilling and Sharon Harris

*See winning paintings beginning on page 8.*

### SWA Needs More Volunteers!

There are a number of tasks both big and small that need extra help. If you would like to get more involved with SWA and our friendly group, please consider volunteering to help out. Here are the most urgent tasks we need help with:

- Someone to take care of posting our events on MeetUp. MeetUp is a social media platform we use along with Facebook and Instagram to advertise our events. This is no more than 30 minutes each month.
- A back-up person to handle the recording of our monthly demos. After training this would be around three hours per month

on the third Saturday. If you have any experience with video equipment, this would be a great task for you.

- We need a new webmaster. Sherry Vockel has done a terrific job creating and maintaining our website but she would like to turn this over to a new person. Due to changing technologies, we need to create a new website. We need someone who is experienced in creating websites. We're not sure if any of our members have this skill so we would also appreciate any recommendations on outside help.

We will post other needs as they occur but if you have a little time to help out with these tasks or anything else, please let us know!

### Remembering Linda Joyce Attell

April 19, 1942–June 15, 2023

Linda Joyce Attell, born April 19, 1942 in San Francisco, passed away peacefully on June 15, 2023.

Linda was a long time member of SWA. Linda worked in marketing, retiring in 2007. She was involved with the local Jewish and art communities, and loved to paint and cook.



### Remembering Reba Anne Leon

July 7, 1943–January 9, 2024

Reba Anne Leon, age 80, of Pacifica, California, passed away on Tuesday, January 9, 2024.

Reba was a long-time member of SWA. She worked in pastels, oils, and acrylics and was just beginning to experiment with watercolors. Her favorite subjects were horses, dogs, cats, and landscapes. She went on many plein air painting group outings and loved the landscape of the Southwest. Her roots were in Arizona and she maintained a fiercely independent Western outlook.



## SWA SIGNATURE AWARD SCHEDULE

Any member in good standing who has complied with the rules concerning the SWA Signature Award as set forth in the SWA By-Laws shall have the right to use the letters “SWA” in conjunction with his or her name and shall receive a certificate signed by the SWA President. Use of said letters without this certificate is prohibited.

**150 Points total, must include acceptance into:**

**2 SWA San Francisco Annual Major Exhibits**

5 points for acceptance in a show

6 points for Honorable Mention Award (which includes the 5 points for acceptance)

8 points for 3<sup>rd</sup> place Award (which includes the 5 points for acceptance)

10 points for 2<sup>nd</sup> Place Award (which includes the 5 points for acceptance)

12 points for 1<sup>st</sup> Place Award (which includes the 5 points for acceptance)

15 points for Best of Show in reg. show (which includes the 5 points for acceptance)

### *MAJOR EXHIBITS:*

30 points for SF Chapter, SWA Annual Exhibit

(no additional points for awards)

15 points for San Joaquin Valley Chapter Annual Exhibit

(no additional points for awards)

10 points for Special Designated SWA Exhibits

Acceptance in a show gives the artist 5 points. If more than one painting was accepted for the exhibit, the artist will still count only 5 points for each show. If an Award is given for one painting, the total points for the award are counted as indicated above.

SWA Signature Award Points are given *only* for SWA Juried Shows.

Completed application, along with PHOTO COPIES OF RECEIPTS, should be mailed to the Chapter President. The Signature Award Chairperson will verify the application correctness, then it will be presented at the next Board Meeting for approval.

**SWA SIGNATURE AWARD APPLICATION**

**YOU MUST SAVE ALL SHOW RECEIPTS FOR PROOF OF ACCEPTANCE. WHEN YOU HAVE EARNED 150 POINTS, RETURN THIS FORM, WITH PHOTO COPIES OF YOUR RECEIPTS TO SWA PRESIDENT**

Name: \_\_\_\_\_

SWA Membership Number \_\_\_\_\_

Address \_\_\_\_\_ City, State \_\_\_\_\_ Zip \_\_\_\_\_

\*\*\*\*\*

NAME OF SHOW	MONTH & YEAR	AWARDS	TOTAL POINTS
--------------	--------------	--------	--------------

- 1. \_\_\_\_\_
- 2. \_\_\_\_\_
- 3. \_\_\_\_\_
- 4. \_\_\_\_\_
- 5. \_\_\_\_\_
- 6. \_\_\_\_\_
- 7. \_\_\_\_\_
- 8. \_\_\_\_\_
- 9. \_\_\_\_\_
- 10. \_\_\_\_\_
- 11. \_\_\_\_\_
- 12. \_\_\_\_\_
- 13. \_\_\_\_\_
- 14. \_\_\_\_\_
- 15. \_\_\_\_\_
- 16. \_\_\_\_\_
- 17. \_\_\_\_\_
- 18. \_\_\_\_\_
- 19. \_\_\_\_\_
- 20. \_\_\_\_\_



## Member News

We have added a Member News page. Members can announce acceptance into other shows, solo shows or awards. The announcements should be print ready and can include a small photo of the work you are featuring. Additionally, you can list workshops or classes you are giving. It does not include advertisement for the sale of art supplies. Send your announcements to Laura Johnson (dollsinmin@sbglobal.net). The deadline for the next issue is included in each Bulletin.

**Downtown Artist Gallery  
PRESENTS  
DANIEL JANZEN  
SPECIAL GUEST  
NEPTUNES**



**ART HOP JUNE 6TH**      **RECEPTION JUNE 8TH 1-3**



**701 L ST. FRESNO, CA. 93721. PH. 559 304 3424**

**FUSING ARTISTIC FORMS ON FABRIC & FIBER**

**Society of West-Coast Artists Art Center**  
527 San Mateo Avenue, San Bruno, CA 94066  
Saturday, July 20, 2024 • 1:00pm-3:00pm

*Lillian Wu*, Signature member of SWA will demonstrate on several types of fabrics with dyes and paints.

You will see her use brush painting techniques, silk screening and printing.  
She will display her finished scarves, wall hangings and collage.



## Jim Stinger

Jim Stinger has two paintings on display through Art Liaisons at Philz's coffee in Redwood City. They are for sale.





# May–June 2024 Exhibit

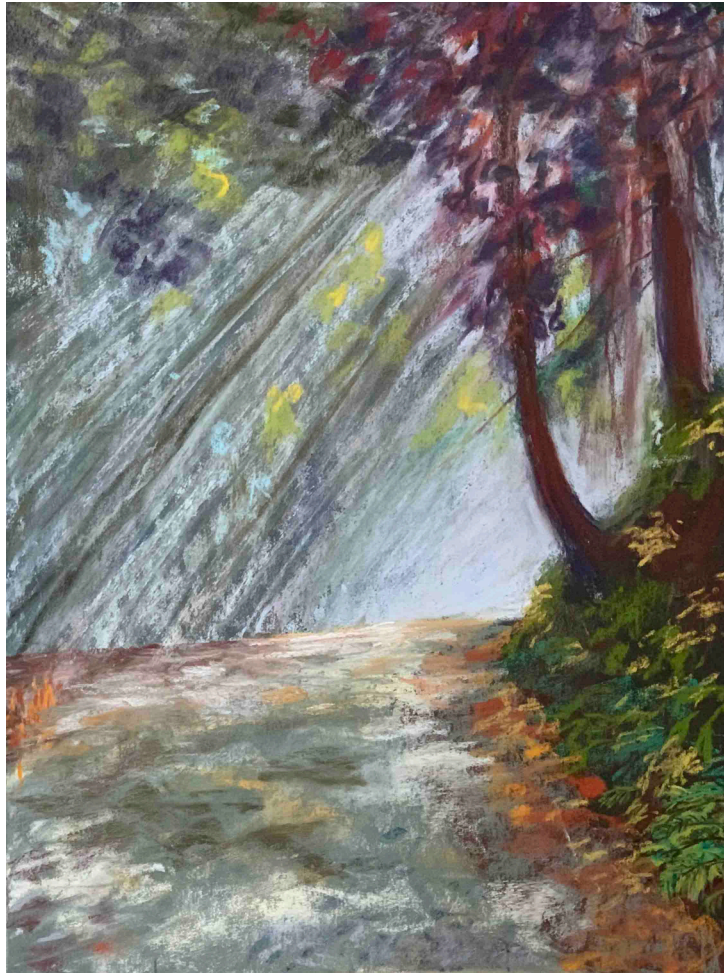


**1<sup>st</sup> Place**

*Glasigloo*

*Watercolor by Susan Jochheim*





**2<sup>nd</sup> Place**

*Filtered Light*

*Pastel by Sharon Slusarz Harris*